

Clean Transportation Programs

To meet our mission of becoming the cleanest, safest, and most reliable energy infrastructure company in America, we're facilitating the transition to zero-emission vehicles and equipment

TEAS – Electrification Support

No-cost technical guidance to help fleets plan and deploy EV charging infrastructure.



Supports fleets with:

- Site planning & load forecasting
- Pricing plan selection & optimization
- Guidance on emerging tech

Power Your Drive for Fleets

Support to cost-effectively design and install charging infrastructure for medium and heavy-duty EVs



Connects fleets with:

- Industry resources
- Charging rates
- Financial incentives

Pricing Plan Support for Lower-Cost Fleet Charging

Help for fleets to manage electricity costs with flexible, predictable pricing plans.



Provides access to:

- EV-HP: fixed monthly costs
- Dynamic Export: credits for exporting
- Time-of-Use: off-peak charging

Rule 15 & Rule 16 Grid Connection Support

Helps bring power to EV charging sites through utility and service line extensions.



Support could include:

- Utility-side upgrades (transformers)
- Customer service lines to meter
- Cost-sharing for undergrounding

Transportation Electrification Advisory Services

Access guidance and resources from early planning to post-energization with expert fleet advisory support and tools to answer your questions or work through roadblocks.

Program Goals:



Advance and simplify the electrification process for commercial customers



Make selecting, owning, and operating electric vehicles **less daunting and more accessible**



Provide **customized resources** and tailored education



Guide customers from the initial planning stage through post-energization

Who is a TEAS Customer?



Medium & Heavy-Duty Fleets with a facility in SDG&E's service area



Fleets at **every stage** of their electrification journey—from initial planning to post-energization



Priority Customer Segments Include:

- ❖ Small Businesses
- ❖ Schools
- ❖ Tribes
- ❖ **Transit Agencies**
- ❖ Municipalities

Fleet Friendly Charging Rates

Help for fleets to manage electricity costs with flexible, predictable pricing plans.

Simple, Stable Monthly Billing

SDG&E's reduced EV-HP pricing and simpler billing **make the transition to electric vehicles easier and more cost-effective**, especially for EV fleets.

This plan offers reduced pricing through 2031 and provides customers with simple, stable, monthly billing.

Reduced Demand Charges

For fleet program customers, EV-HP allows you to subscribe to a simple pricing plan that is **matched to your fleet's power consumption**.

What vehicle types are eligible for the EV-HP pricing plan?

MEDIUM-DUTY

 Delivery & Shuttle (Class 2-6)
>6,000 LBs

 Work truck (Class 2-6)
>6,000 LBs

HEAVY-DUTY


 Transit (Class 7-8)

 School bus (Class 6-7)

 Goods movement (Class 7-8)

 Transport refrigeration units (Class 2-8)

OFF-ROAD

 Yard trucks (Class 7-8)

 Airport ground support equipment (Class 4-7)

 Forklifts (Class 2 or higher)
>6,000 LBs

OTHER

 Truck stop electrification

Rule 15 & Rule 16 Grid Connection Support

Infrastructure rules help bring power to EV charging sites through utility and service line extensions.

PLEASE NOTE:

Rule 45 has now closed to new applications due to a CPUC funding cap.



How to get started:

- **Engage SDG&E early**
Start coordination during site planning.
- **Request load analysis**
Understand transformer and service needs.
- **Review undergrounding requirements**
Know what's needed for your site.
- **Coordinate with TEAS**
Get free technical guidance and support.
- **Confirm cost responsibilities**
Understand what SDG&E covers vs. what you fund.

Power Your Drive *for* Fleets

Help for fleet owners and operators to reduce operating costs, eliminate emissions, and simplify vehicle maintenance by transitioning to electric vehicles.

How PYD for Fleets works:

- **SDG&E helps install make-ready infrastructure**
Working with fleets from initial planning through to design, construction, and ongoing site maintenance.
- **Available to class 2-8 on- and off-road vehicles**
Certain sectors are particularly suited for electrification, including transit agencies.
- **Additional resources and financial incentives**
For fleets operating in disadvantaged communities, as well as small business fleets.



Power Your Drive *for Fleets*



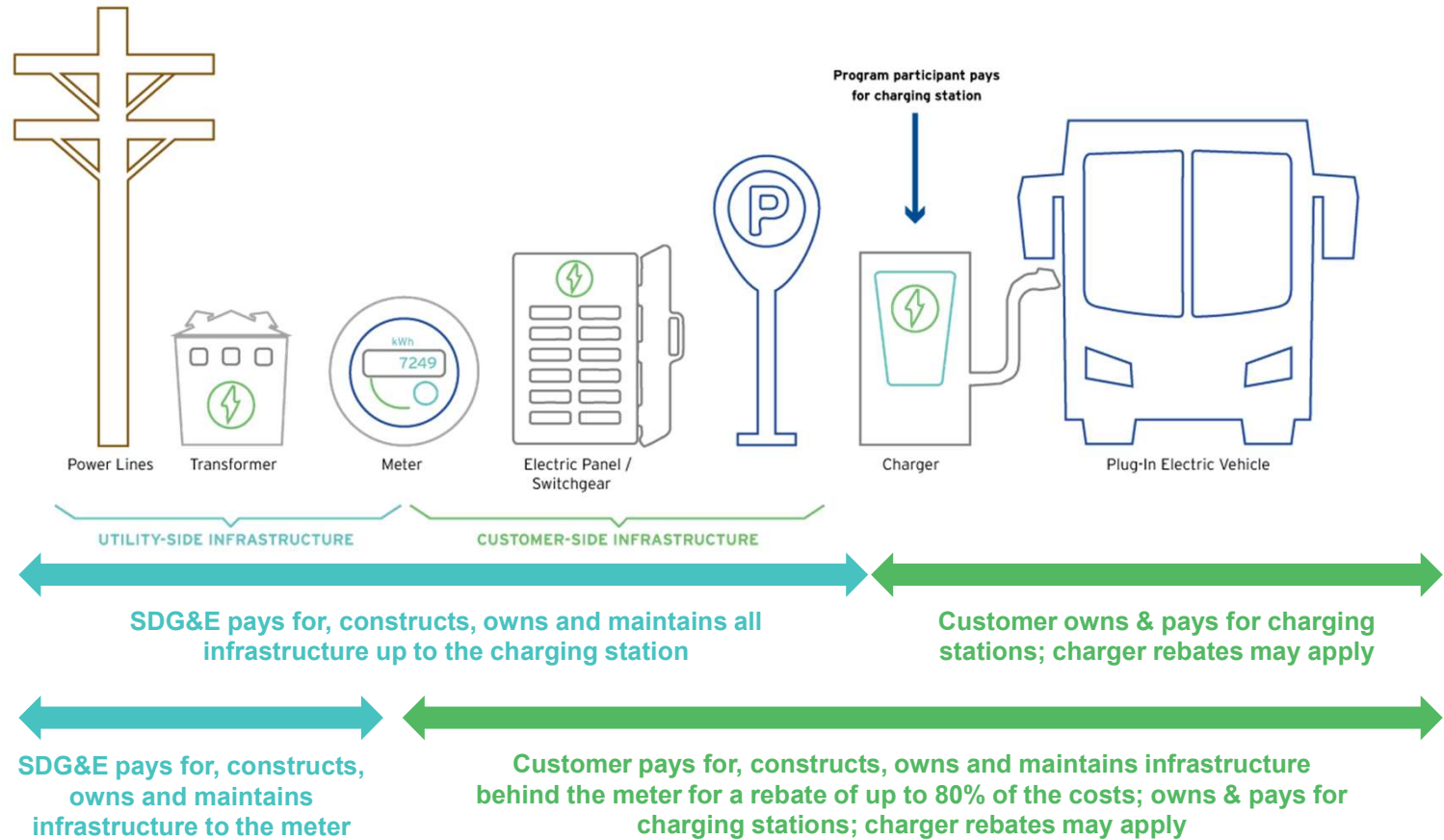
SDG&E helps install make-ready charging infrastructure for medium- and heavy-duty fleets

Option 1:

SDG&E-Owned Infrastructure

Option 2:

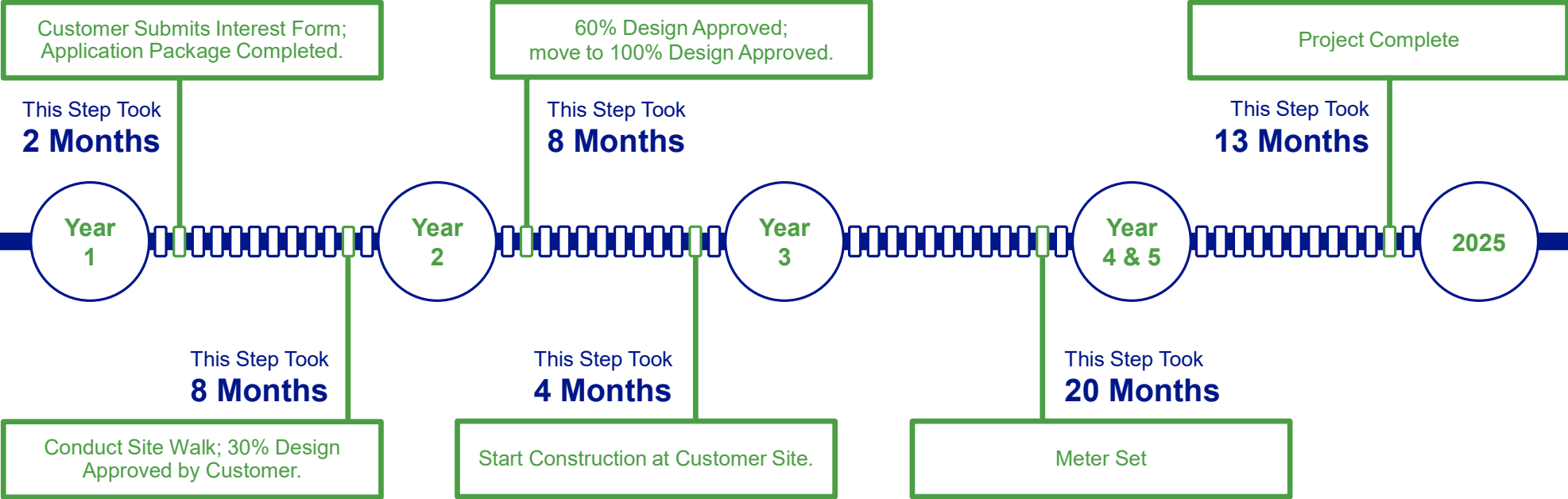
Customer-Owned Infrastructure



Power Your Drive for Fleets

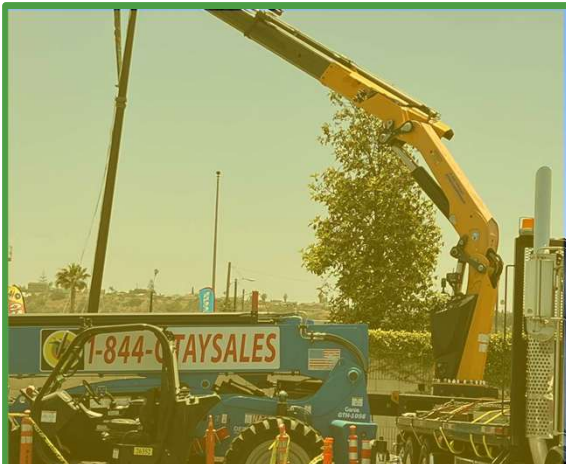
San Diego Metropolitan Transit System (MTS) IRIS Rapid Transit Project

This project was delivered on-time and took a total of around 55 months.



Power Your Drive *for Fleets*

San Diego Metropolitan Transit System (MTS) IRIS Rapid Transit Project



POLE SWAP OUT
REPLACED 25' WITH 35'



TRENCH PLATES WORKED
AROUND TRAFFIC
(MAJOR ARTERIAL)



RESTORATION & CLEANUP

Future of Transportation Electrification

SDG&E is continuing to evolve its transportation electrification offerings to support fleet planning and infrastructure deployment.



Potential Future Programs & Offers

- **Continued Technical Advisory Support**
Early electrification planning guidance
- **Pre-Owned EV Rebate**
Support for used electric vehicles
- **Affordable Public Charging**
Low-cost public charging access
- **Residential Charging Rebate**
Home charging installation support
- **EV-HP Rate Incentive**
Fleet electricity cost relief



Fleet Electrification From Planning to Energization

CalACT Spring Conference
April 13, 2026

Lianna Lienau
EV Customer Solutions Manager
LLienau@sdge.com