

TIRCP Clinic



Transit and Intercity Rail Capital Program (TIRCP) Background

- The TIRCP was created to fund transformative capital improvements that modernize California's intercity rail, bus, ferry, and rail transit systems; to significantly reduce emissions of greenhouse gases, vehicle miles traveled, and congestion.
- Since 2015, \$11.3 billion in funding has been awarded to 159 projects throughout the State.



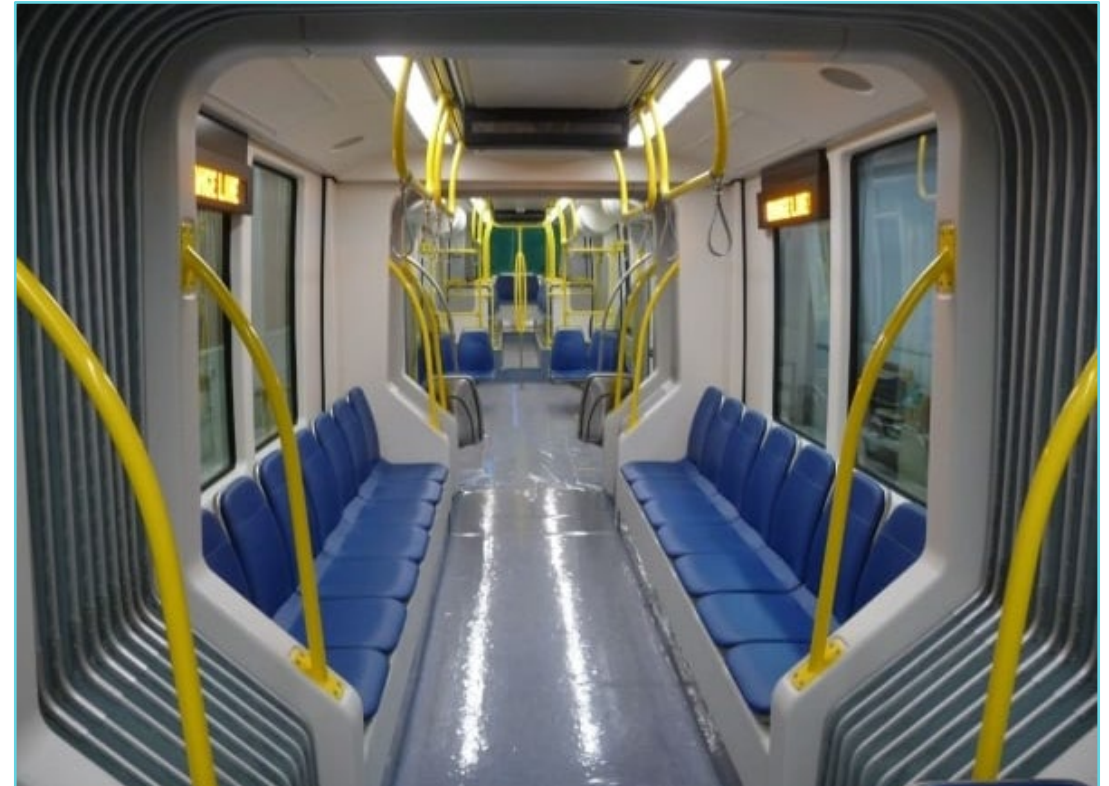
TIRCP Objectives

- 1. Reduce emissions of greenhouse gases
- 2. Expand and improve transit service to increase ridership
- 3. Integrate the rail service of the state's various rail operations, including integration with the high-speed rail system
- 4. Improve transit safety



TIRCP Funding

- The TIRCP receives a portion of the Transportation Improvement Fee revenues established by SB 1.
- A continuous appropriation of 10% from the quarterly Cap-and-Trade auction proceeds deposited in the GGRF.
- And any annual budget allocations provided by enacted budget bills. (Ex: SB 125)

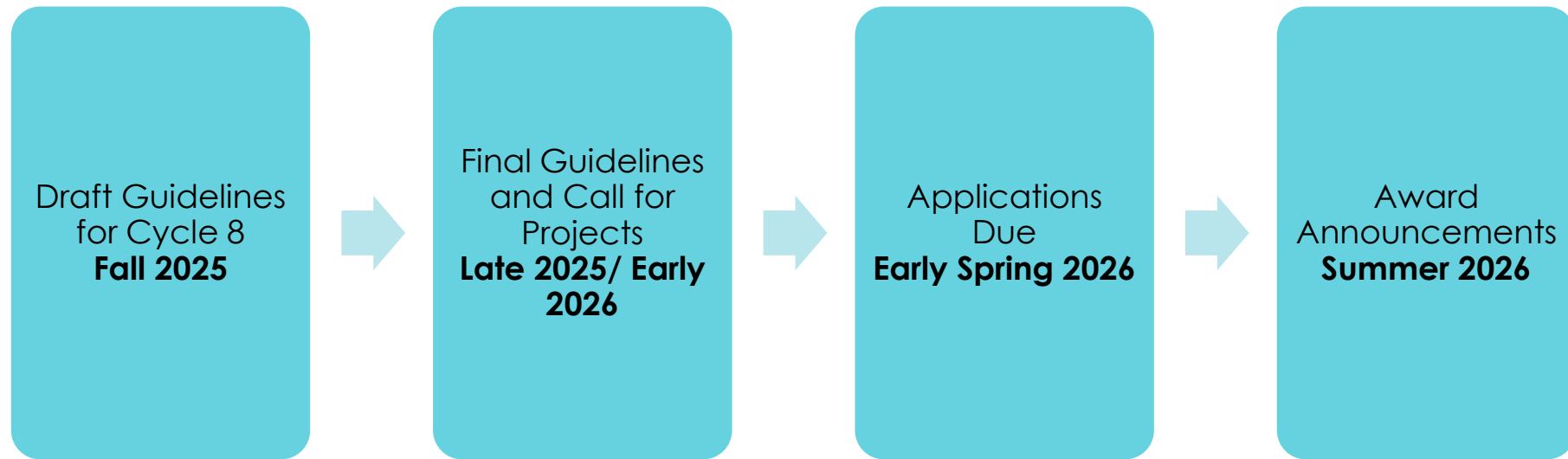


Cap and Invest Extension

- On September 19, 2025, the Governor signed legislation reauthorizing California's Cap-and-Trade Program, now known as Cap-and-Invest through 2045.
- This extension of Cap and Invest allocates \$400 million in Transit and Intercity Rail Capital Program funding across the state annually.
- It also allocates \$1 billion annually to the California High-Speed Rail Project and \$200 to the Low Carbon Transit Operations Program.



Proposed Timeline of TIRCP Cycle 8



Submitting a High-Quality Application

- Pre-application consultations with CalSTA are available where applicants can ask clarifying questions on their potential projects.
- Applications should be complete, concise, and well-organized.
- Full of clear and quantifiable benefits tied to the goals of the program.
- Applicants should present project elements that are scalable or separable in a manner that allows the greenhouse gas emission reductions of each element to be understood.



Submitting a High-Quality Application

- Follow the Project Guidelines and Call for Projects documents thoroughly, including all required components:
 - Signed Cover Letter
 - Project Narrative
 - Statement of Works
 - KML/KMZ Files
 - Support Documents (Letters of Support, Transportation Plans, etc.)
 - CARB Tools



Submitting a High-Quality Application

- Emphasize the long-term, systemic change, not just small upgrades.
- Frame your project as part of a larger shift:
 - Network integration.
 - Major service expansion.
 - First/last-mile accessibility.
- Demonstrate how the project lays the groundwork for future phases or unlocks a regional potential.



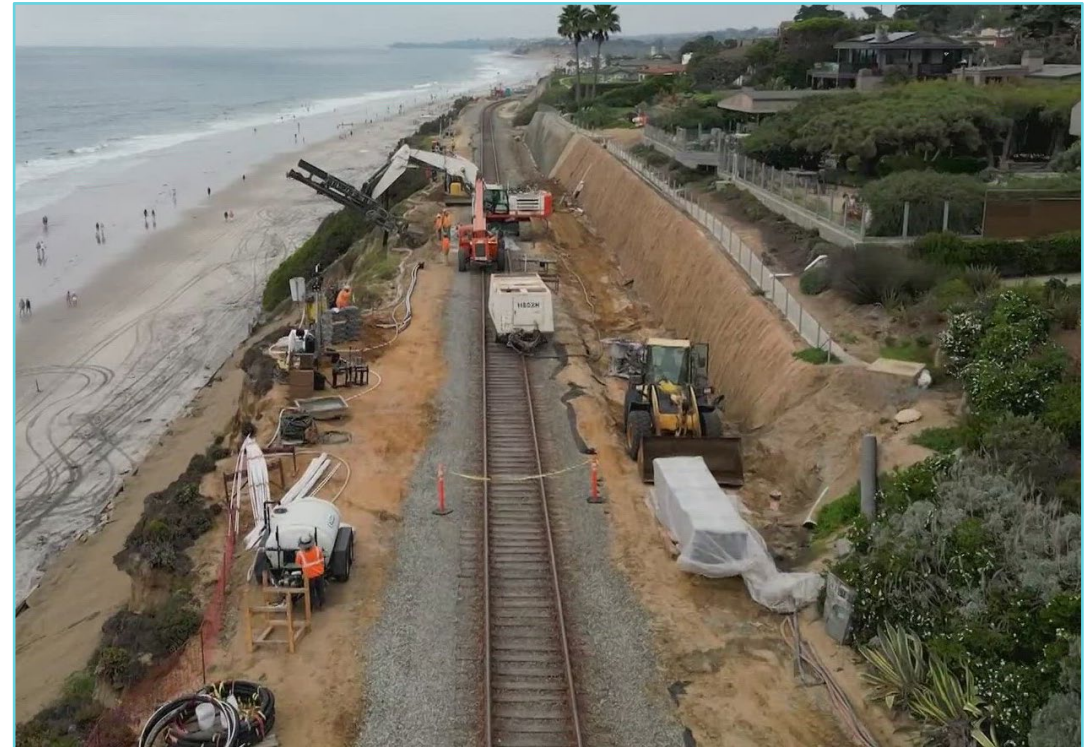
TIRCP Project Highlights

- Central Contra Costa Transit Authority's **Solar Supported Zero Emission Vehicle Fleet and Service Modernization Project**
 - Purchase of 27 zero-emission buses to be deployed on a new service network with increased vehicle speeds, increased frequencies, and better coordination with BART.
 - Installation of 90,000 square feet of solar panels through solar canopies in the bus yard and on existing administrative facilities.
 - Microgrid battery storage facilities to charge the new vehicles.



TIRCP Project Highlights

- **The Del Mar Bluffs Stabilization Project** will include the installation of up to 128 new soldier piles, which involves the installation of vertical piles with a connecting grade beam at the top.
- This method reduces the risk of deep-seated slope failure beneath the tracks along the Del Mar Bluffs and avoid the associated shut down in rail service between San Diego and the rest of the LOSSAN Corridor.
- The project will increase safety and service reliability to passengers and freight by minimizing the chances of track damage caused by slope failure.



CARB Tools

- The California Air Resources Board (CARB) provides the following tools that are required of every TIRCP Applicant:
 - **GHG Benefits Calculator:** Quantifies emission reductions
 - **Jobs Co-benefit Modeling Tool:** Estimates employment impacts
 - **Priority Population Evaluation Criteria:** Assesses benefits to disadvantaged and low-income communities





More from CARB Next





Thank You!

tircpcomments@dot.ca.gov

