



Strategic Growth Council Community Resilience Centers Program

**CALACT Conference | 4.18.23, 1:00-2:30 pm |
Presenter: Dora Monterroza**



**CALIFORNIA
STRATEGIC
GROWTH
COUNCIL**





Agenda

- Introduction to SGC
- Community Resilience Centers Overview
- Group Discussion:
 - Around the Room
 - Breakout to smaller groups
- Next Steps

Introductions

- Around the Room Introductions:
- **Name, organization, role**
- Tell us a bit about the location/
community/ region you serve





Our Vision

Healthy, thriving, and resilient communities for all

Our Mission

The mission of the Council is to coordinate and work collaboratively with public agencies, communities, and stakeholders to achieve sustainability, equity, economic prosperity, and quality of life for all Californians

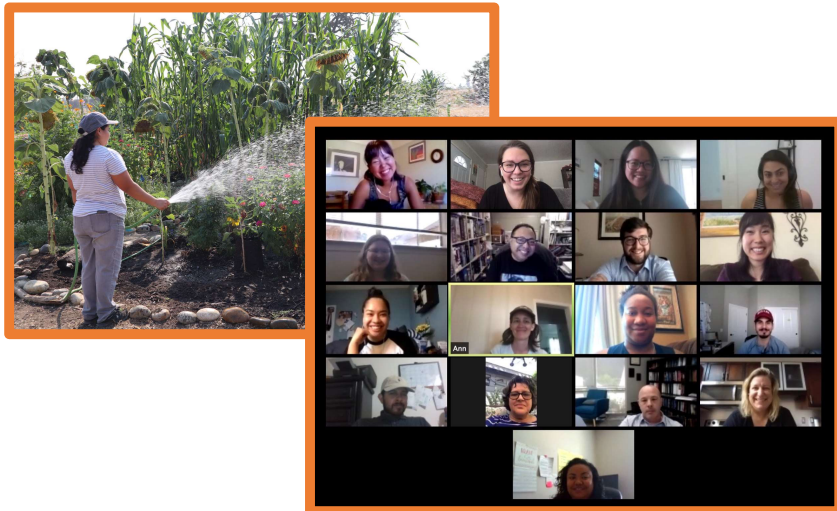


CALIFORNIA
STRATEGIC
GROWTH
COUNCIL



How We Work

Five key themes guide SGC's investments, programs, and initiatives:



What We Do: Programs and Initiatives

SGC's work falls under four main categories.



Investment Programs



Collaborative Policy Initiatives



Integrated Policy and Planning



Capacity Building and Technical Assistance



CALIFORNIA
STRATEGIC
GROWTH
COUNCIL



CRC Program Overview



CALIFORNIA
STRATEGIC
GROWTH
COUNCIL

CRC Program Overview

- \$270 million new grant program, established by SB 155, AB 211
- Funding for the construction or retrofit of facilities to serve as **community resilience centers**
- Emergency response *and* building long-term resilience
- Round 1: **\$100 million** available for planning & implementation funding



Enabling Statute & Codified Language

SB 155

- Emergency response and long-term resilience
 - Integrated delivery of services
- Multi-stakeholder partnerships
 - Community-based orgs (CBOs)
 - Local residents
- Public process



AB 211

- Prioritize projects:
 - located in and benefiting **under-resourced communities**;
 - Represent the statewide geographic diversity
 - **Inclusive of both rural and urban communities in incorporated and unincorporated areas**

Program Funding Totals

Current Program Funding

Round 1

\$110 M

Future Rounds

\$160 M

Total: \$270M General Fund



Round 1 Updated Funding Breakdown

Grant Funds

- \$100 M total grants
 - Planning, Pre-development, Implementation activities
- Up to \$10 million for construction & operation of CRCs

Admin & Support Funds

- \$10 million
 - Program administration & staffing
 - Technical assistance
 - Program evaluation



Core Components

- **Multi-stakeholder partnerships**
- **Robust community engagement** throughout all phases
- **Capital Projects**
 - physical infrastructure investments to the CRC Facility and CRC campus amenities
- **Community resilience services & programs**
 - social infrastructure investments in services and programs, to ensure ongoing year-round usage of the CRC and strengthening local community resilience



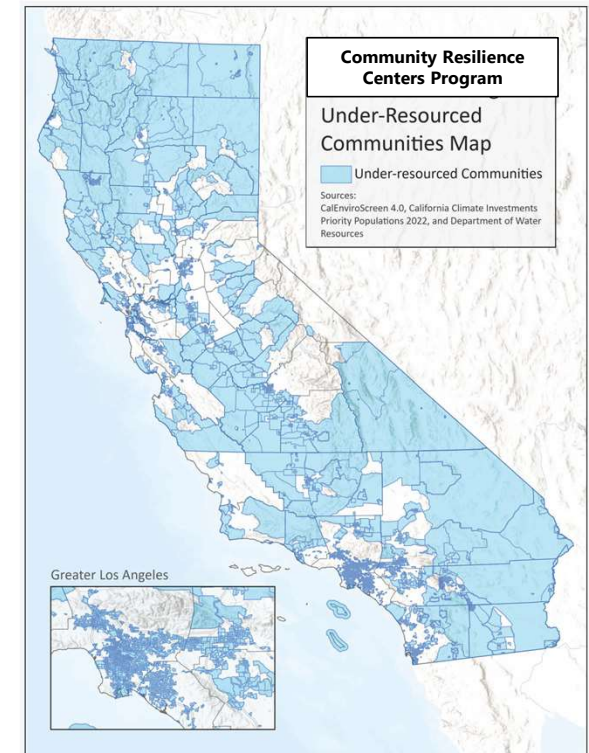
CRC Program Overview

- Build **climate resilience & community resilience**
- Prioritize **community-serving locations**
- Require **community engagement & CSS**
- Balance **shorter-term & longer-term** needs
- **Prioritize most vulnerable**
- Fund **mix of projects**
 - Climate impacts, facility and lead applicant type, geographic diversity



Priority Communities

- **Under-resourced communities**
- **Tribal Lands, unincorporated communities, and rural communities** that meet the definition of an under-resourced community
- **Tribal Funding Target:** intend to fund **5+ projects**, across implementation and planning, where Lead Applicant is a CA Native American tribe





CRC Implementation Grants



CALIFORNIA
STRATEGIC
GROWTH
COUNCIL

Program Objectives

- Offer **multi-benefit physical community-serving spaces**
 - Resilient to current and future climate hazards
- Provide **integrated delivery of services and programming**
- Integrate physical infrastructure projects with social infrastructure
 - Through **community-driven partnerships and programming**
- Leverage and build a **skilled, diversified, and trained workforce** and promote **local workforce development and training opportunities**, and to
- Strengthen and sustain **local leadership and grassroots engagement** in civic and community development, and climate resilience awareness and activities



Eligibility

- Broad eligibility for Applicants and Facility Types
- Project Area
 - Capital Projects (CRC Facility retrofits and construction, and campus amenities) must:
 - Be on the **same parcel** as the CRC, or an **adjoining parcel, OR**
 - Be **within a one-mile radius** of the CRC accessible by pedestrians and individuals using wheelchairs or other mobility devices, or accessible by vehicle, by the end of the grant term.
 - More than one CRC Facility is allowable, must address how each will serve **distinct communities** within their region



Strategies

1. Energy resilience
2. Water resilience
3. Air quality & public health
4. Nature-based solutions & food security
5. Emergency preparedness & critical communications
6. Mobility & access
7. Workforce development, education & training

Applicants must select at least 4 strategies



Strategy 6: Mobility & Access Examples

Capital Project Activities:

- public transit service extension; bus stop addition
- mobile units/ shuttles for AFN communities
- EV fleet & charging infrastructure
- Bike lanes and sidewalk improvements within 1 mile of CRC Facility
- EV car-share; accessible signage, such as for accessible parking and accessible routes

Community Resilience Services and Programs Activities:

- development of paratransit and vanpools
- micro-mobility programs (e.g., bike and electric bikeshare)
- culturally and linguistically appropriate training on EV, car-share use, bicycle use and enrollment
- safety education programs for active transportation



Eligible Activities

Capital Projects

- CRC Facility
- Campus Amenities

Community Resilience Services & Programs

- Health & Well-being
- Emergency Preparedness & Response
- Access & Mobility
- Information Distribution
- Housing Affordability & Protection
- Workforce Development



Eligible Costs

- *Direct Implementation*
 - **Capital Projects** - at least 51% of award
 - 10% of total award can fund pre-development costs *
 - 10% of total award can fund basic infrastructure *
 - **Community Resilience Services and Programs** – up to 20% of award
- *Community Engagement* – up to 10% *
- *Indirect Costs* – up to 12%
- *Data Collection and Indicator Tracking* – 3-5% *

Asterisked () cost categories are flexible*





Project Requirements



CALIFORNIA
STRATEGIC
GROWTH
COUNCIL

CRC Facility Requirements

- Required Functions & Features must be met *by end of CRC Implementation Grant award term*
- Must involve a physical building
- Will have option for rural communities to request modifications, with justification for features/ functions with an asterisk (*)



Facility Functions

Required Functions *by end of CRC Implementation Grant award term:*

- Be open and accessible to the public and offer Community Resilience Services and Programs year-round to residents
- Able to be activated **7 days per week** for heat waves and other climate emergencies that do not require overnight sheltering
- For large scale disasters that require overnight shelter:
 - Able to be activated for **overnight shelter 24/7**
 - Or coordinate transport of community members to an **identified nearby shelter**



Overnight Shelter Requirements

CRCs that will provide overnight-shelter during disasters must meet the following functions at the site itself or through partnerships:

- Space and supplies needed for people to sleep
- Pet-sheltering*
- Food distribution or space for food preparation and storage
- Showers and ADA-compliant showers*
- Refrigeration for medicines
- Laundry*
- Portable restrooms in the event of water disruptions*



Facility Features

Required Features *by completion of the project:*

- ADA-compliant facilities (see ADA Checklist for Emergency Shelters)
- Gender-neutral restrooms
- Heating, Ventilation, and Air Conditioning (HVAC) System
- Air filtration system (MERV 13 at minimum)
- Broadband access*
- Backup power generation and/or battery storage*
- Device charging capabilities for cell phones, personal communications devices, medical devices, power wheelchairs, and other assistive devices and technology*
- Drinking water stored on-site with a plan for re-supply

Optional features can include: conference rooms; child-care spaces; computer labs; medical facilities/resources; outdoor spaces



Services & Usage

Required Provision of Services and Use as CRC:

- Min. **15 years usage of facilities** as CRCs following project completion
- Grantees must offer Services and Programs through end of grant term



Required Plans

Upon submission of Full Application materials, draft plans are required. Grantees will update and complete plans during award term:

- **Emergency plan:** mobility plan, emergency communications, energy resilience plan, plan to work with relevant emergency responders and direct service orgs; agreements to support activation; follow emergency procedures and plans
 - All plans should consider and integrate into plans how they will serve vulnerable community members, including Access & Functional Needs (AFN) Communities.
- **Year-round community resilience plan:** to ensure year-round usage of CRC Facility



Program Thresholds

- Community Engagement Plan
- Partnership Agreement and/or Memorandum of Understanding (MOU)
- Site Readiness
- Applicant Capacity
- Long-Term Use of CRC Facility

Applicants must meet all 5 program thresholds



Application Process

Pre-Proposal Phase:

- One entity will submit a CRC Implementation Pre-Proposal on behalf of their Collaborative Stakeholder Structure
- Staff screen Pre-Proposals
 - Staff provide feedback and direction, but no scores.
- In order to qualify for **Application TA**, Applicant must submit a Pre-Proposal (*implementation only*)

Full Application Phase:

- One entity submits all application materials on behalf of Collaborative Stakeholder Structure
- Staff screen for Program Thresholds, then advance Proposals to full evaluation

A horizontal band at the top of the page features a stylized, light blue illustration of an urban skyline. It includes various building shapes, trees, two people riding bicycles, and a car.

CRC Planning Grants



CALIFORNIA
STRATEGIC
GROWTH
COUNCIL



Program Objectives

- Advance the local community's ability to identify, vision, design, construct, resource, and activate **sites** as community resilience centers
- Ensure or increase **accessibility** of CRCs to community members, especially during emergencies
- Build, strengthen, and sustain local **community resilience**, in connection with a proposed CRC
- Demonstrate consistency with the State's **Planning Priorities** contained in Section 65041.1 of the Government Code.
 - These priorities intend to promote equity, strengthen the economy, protect the environment, and promote public health and safety in the state, including urban, suburban, and rural communities.



Eligibility

- **Broad eligibility** for Applicants and Facility Types
 - **Collaborative Stakeholder Structure** required by end of grant term
- **Planning Area** and **Site Identification**
- **Eligible planning activities** include:
 - Preparing applicants to apply for CRC Implementation Grant
 - Identifying and preparing project sites
 - Completing fiscal analyses and studies
 - Building capacity
 - Evaluating, updating, streamlining various policies and codes
 - Preparing or updating local jurisdictional plans
 - Designing or enhancing community engagement



Application Process & Grant Admin

- **Technical Assistance (TA) intake survey** (*optional*)
 - Includes: Concept. Potential project ideas. Potential partners. Forms of TA requested.
 - *Not required to submit CRC Planning Grant application*
- **Full Application:**
 - Includes narrative; workplan; community engagement plan; budgets; documentation on Applicant's capacity
 - *Simpler threshold review*
- Offer **application TA**, not implementation TA
- **2-year grant term**, with option to extend



Program Timeline

- Dec '22 – Jan '23 - R1 Draft Guidelines Public Comment period
- Dec '22 – Mar '23: CRC team incorporates input, meets with subject matter experts and interagency partners
- Apr '23 – CRC team take Final Guidelines to Council for adoption
- May '23—CRC team releases Notice Of Funding Availability (NOFA) & applications
 - Pre-proposal due: June
 - Full proposal due: August/September
- Winter '23—SGC makes Round 1 awards



Contact Us

- Visit our website: <https://sgc.ca.gov/programs/community-resilience-centers/>
- Contact the team at: CRC@sgc.ca.gov
- Sign-up for [CRC E-mails](#)
 - To get updates on the NOFA, Application release, upcoming public workshops, and other information





Questions



CALIFORNIA
STRATEGIC
GROWTH
COUNCIL

A decorative horizontal band at the top of the page features a dark blue background with white icons of a city skyline, including houses, trees, a car, and people on bicycles.

Breakout Groups/ Discussion Questions



CALIFORNIA
STRATEGIC
GROWTH
COUNCIL



DISCUSSION: Around the Room

- Around the Room Introductions:
 - Name, organization, role
 - Tell us a bit about the location/ community/ region you serve
- Discussion Questions:
 - Needed Programming in the locations you work in
 - CRC Projects visioning
 - Partnerships
 - Community Outreach
 - Technical Assistance Flags/ barriers to application



DISCUSSION: Locations/ Programming

- What are some areas you would have liked to see have a Community Resilience Center? Or particular locations turned into CRCs? Why?
- What hazards/ challenges are those communities facing?
- What are some examples or programs that are needed in those communities?



Breakout Groups: CRC Projects Visioning

- Do you have a CRC Project in mind already?
- What needs does it address?
- What are the climate hazards?
- What issues have come up within this community during disaster relief efforts that this project could address?
- How could a CRC build resilience of these communities in non-disaster times? What are some of the services CRCs could provide on an ongoing basis to support communities?



Breakout Groups: Partnerships Brainstorming



- For the areas you serve: what are some organizations, businesses, or partners that you could work with on a project like this?
- Remember to think about year-round and emergency time-frames

Breakout Groups: Community Engagement/ Outreach

- A big component of the CRC Program is engagement of local residents in solutioning!
- Are there existing public forums you can utilize to host meetings with community members to discuss CRC planning and design?
- What are some methods you might want to use to create spaces for this type of engagement? Virtually and in-person?

Breakout Groups: Potential Challenges

- Do you have concerns about any of the application components or Implementation Grant deliverables?
- What may be a challenge that Application Technical Assistance or Implementation Technical Assistance could address?
- What partnerships or resources could you leverage to address identified challenges?



Close-Out: Around the Room Takeaways

- What is one next step you can take in the next 1-2 weeks to get ready for a CRC Round 1 application?
- Who do you know that would benefit from this program, and how can you share info with them about this new funding opportunity?





Thank you!

Contact the team at CRC@sgc.ca.gov



CALIFORNIA
STRATEGIC
GROWTH
COUNCIL