

An aerial photograph showing a green and white bus driving on a two-lane road. To the right of the road is a vast, rectangular field of young, green trees planted in neat rows. In the background, there are rolling hills and some industrial or agricultural structures under a hazy sky.

Building In Resiliency

Rich Tree, Executive Director
Tulare County Regional Transit Agency



8211

TCRTA

Tulare County Regional Transit Agency

ZERO EMISSION

CA 374696

1381757

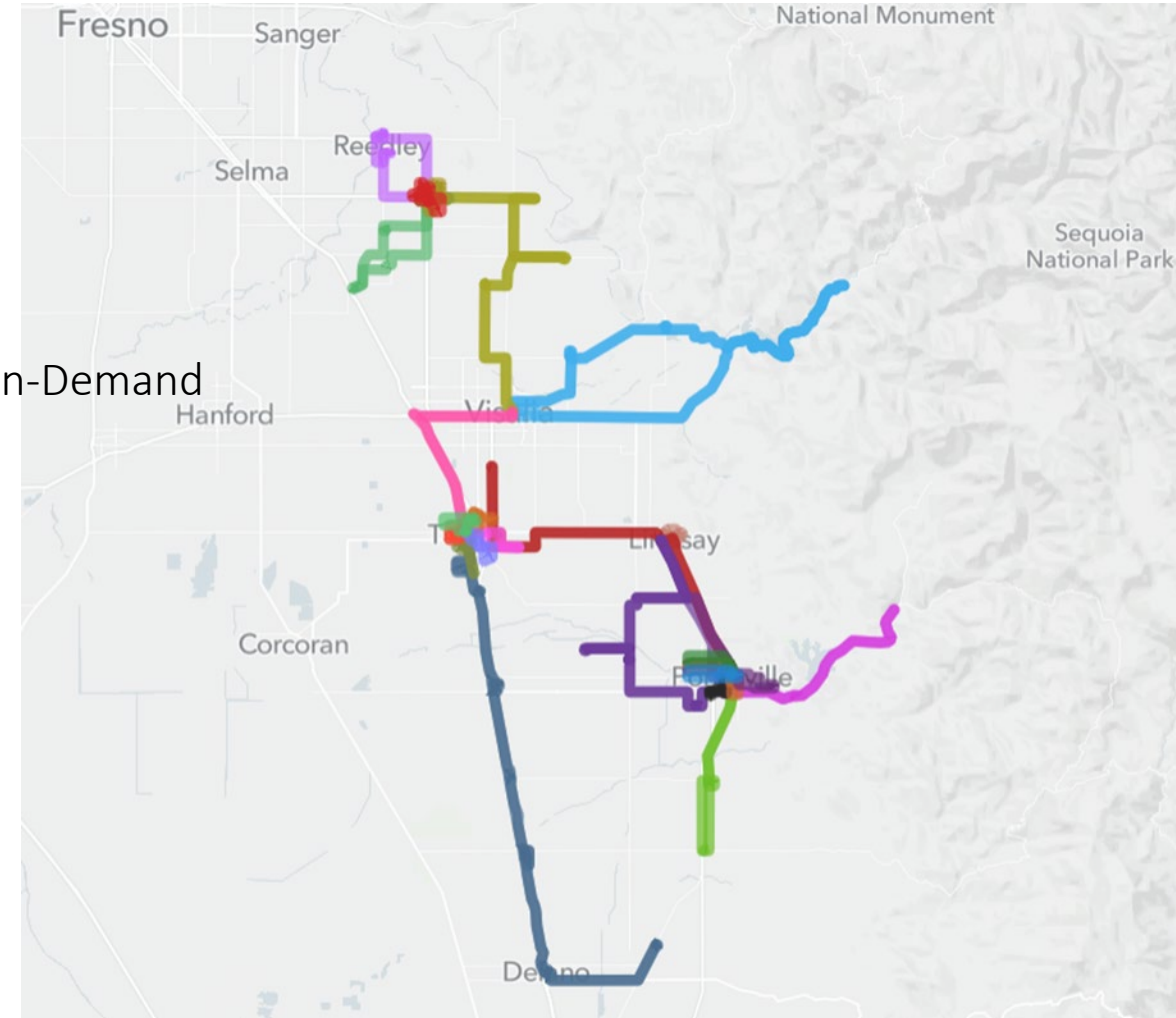
INTRODUCTION

ABOUT TCRTA

- Tulare County Regional Transit Agency (TCRTA)
- Joint Powers Agency formed in 2020
- 9 Member Agencies
- 27 Fixed and Commuter Routes, ADA Paratransit, On-Demand
- 4 Transit Centers with 2 Additional Under Design

SPEAKER

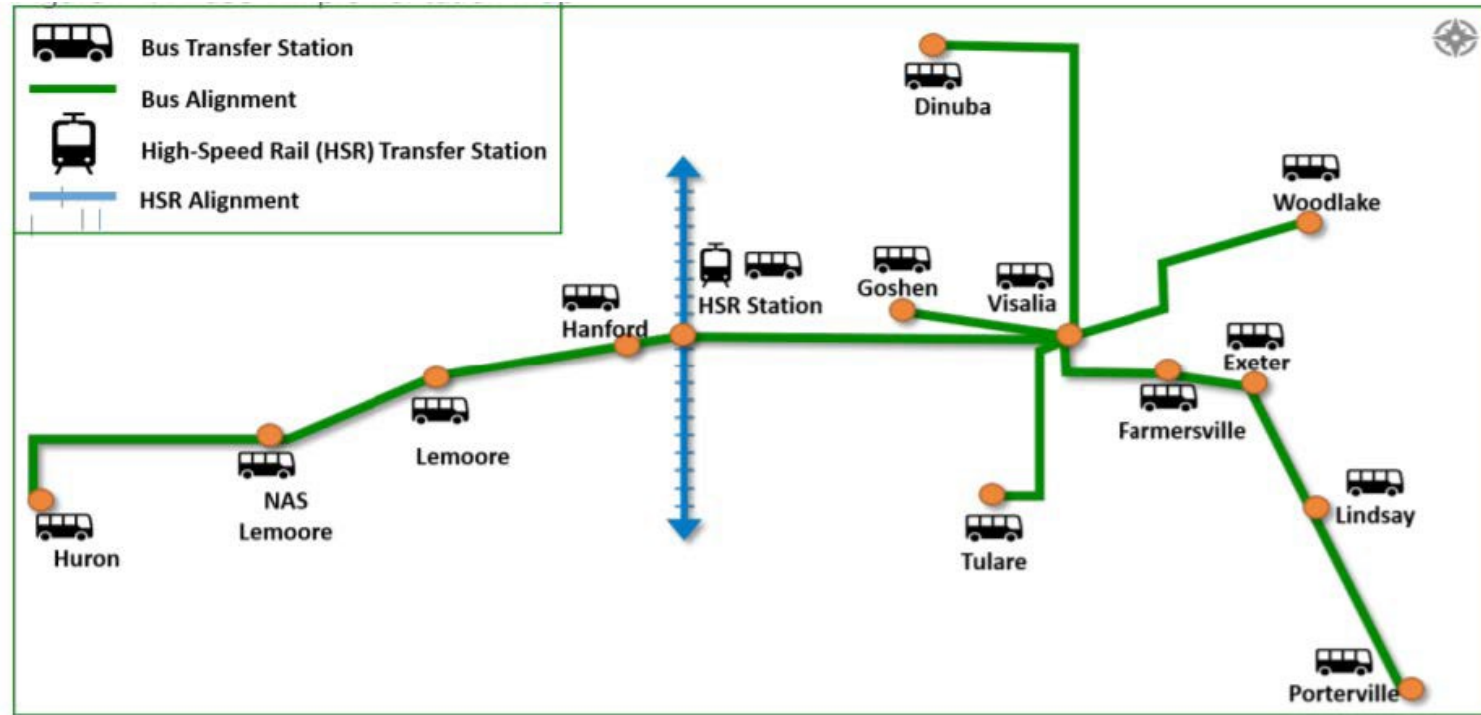
- Richard Tree
- Executive Director
- 23 Years of Experience



BEB Background

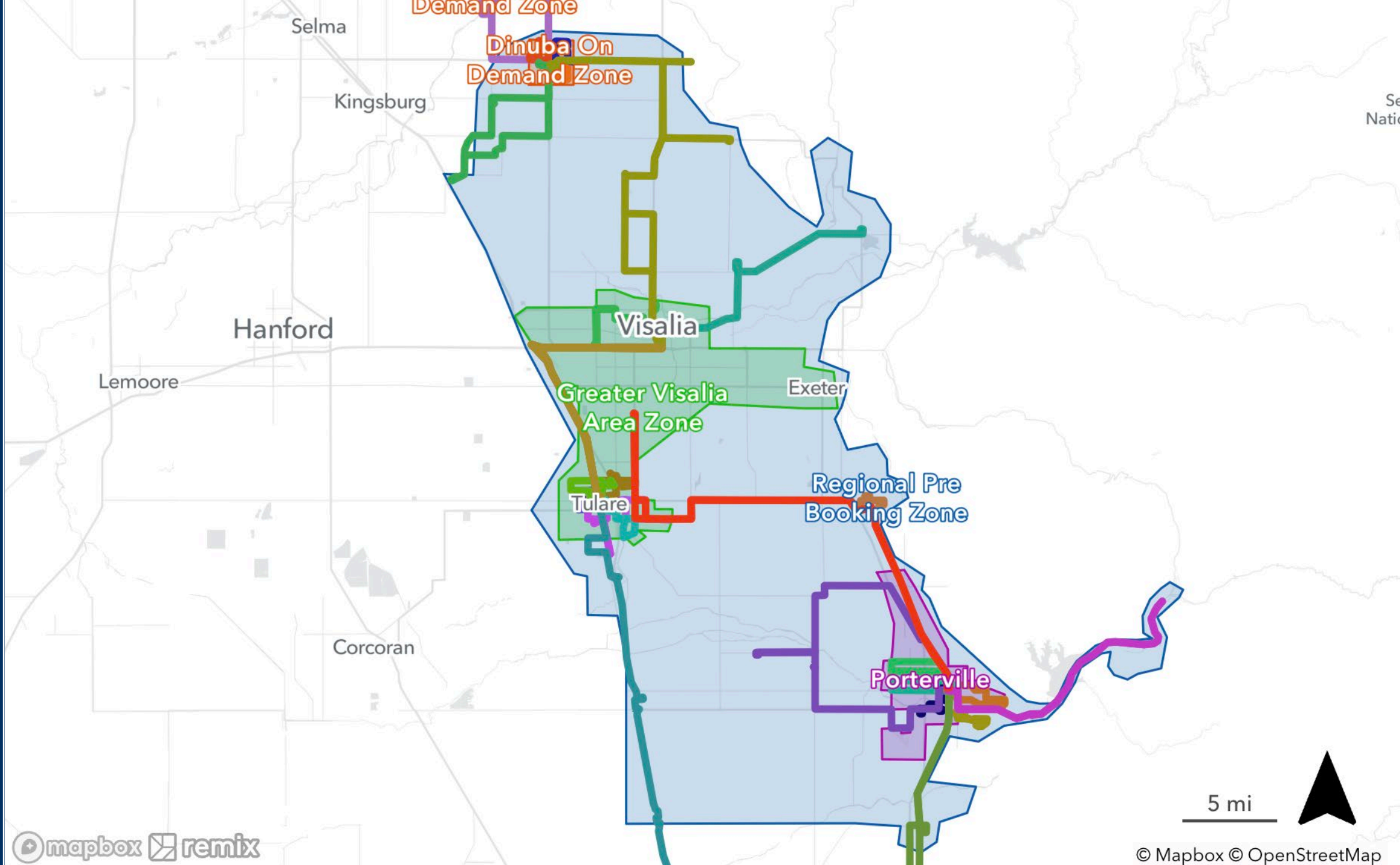


- 13 Battery-Electric Transit Buses
- 15 Battery-Electric Shuttle Vans
- 3 Infrastructure Projects
 - 24 DCFC & 6 L2 Charging Stations
 - Opportunity and Depot Charging



- Hanford Transit Center
- Lindsay Transit Center
- Zero-Emission Fleet
- Increased frequency
- Regional Microtransit Service

Integrated Master Plan



A small green seedling with several leaves is growing out of a crack in a concrete sidewalk. The scene is set during a bright, hazy sunrise or sunset, with the sun low on the horizon, creating a strong lens flare and casting long shadows. The background is a blurred street with buildings and trees, suggesting an urban environment. The overall mood is one of hope and resilience.

What Is Resilience?

A MODERN DEFINITION OF

RESILIENCE:

SO RESILIENT!



"ADVANCING DESPITE ADVERSITY"

GOAL-ORIENTATION,
WORK TOWARDS
YOUR **VISION**

BE **PROACTIVE** -
DON'T WAIT FOR
ADVERSITY

BOTH LARGE AND
SMALL EVERYDAY
CHALLENGES

A landscape photograph showing a large metal lattice tower for high-voltage power lines in the foreground on the left. The sun is low on the horizon, creating a bright glow and silhouetting the tower. In the background, a series of smaller towers and utility poles stretch across a field of dry, yellow grass. Distant hills are visible, and a line of wind turbines can be seen on the horizon under a clear blue sky.

Our Focus Was On
Rolling Blackouts

.AND NOT PLANNING TO RESPOND TO FIRES AND FLOODS

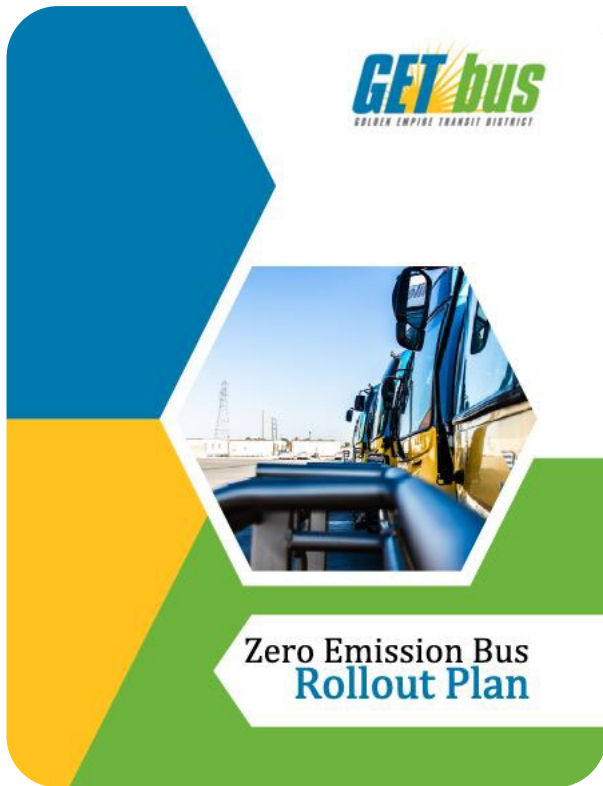




Improvise, Adapt
and Overcome!

Clint Eastwood

HOW DOES THAT AFFECT YOUR ZERO-EMISSION BUS ROLLOUT PLAN?



DUE JUNE 30, 2023

CalACT 2018



SABBATICAL IN CHINA



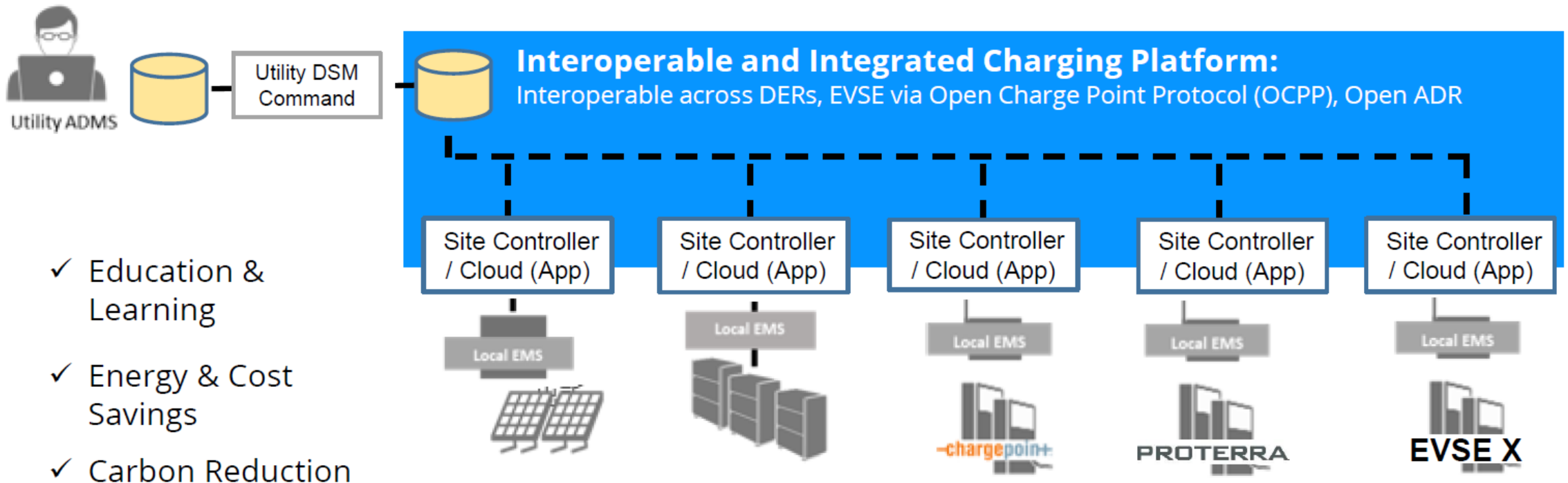


Planning & Collaboration

- Opportunities for Partnerships
 - Transit, Schools, City Fleets
- Early Engagement with Utility Provider
- ZEB Rollout Plan
- Site Planning & Evaluation
- Grid Analysis
- Fleet & EVSE Acquisition

The Big Picture

Utilities, Fleet Systems, and Station Operators working together to accelerate adoption and reducing CO2 emissions.



- ✓ Education & Learning
- ✓ Energy & Cost Savings
- ✓ Carbon Reduction



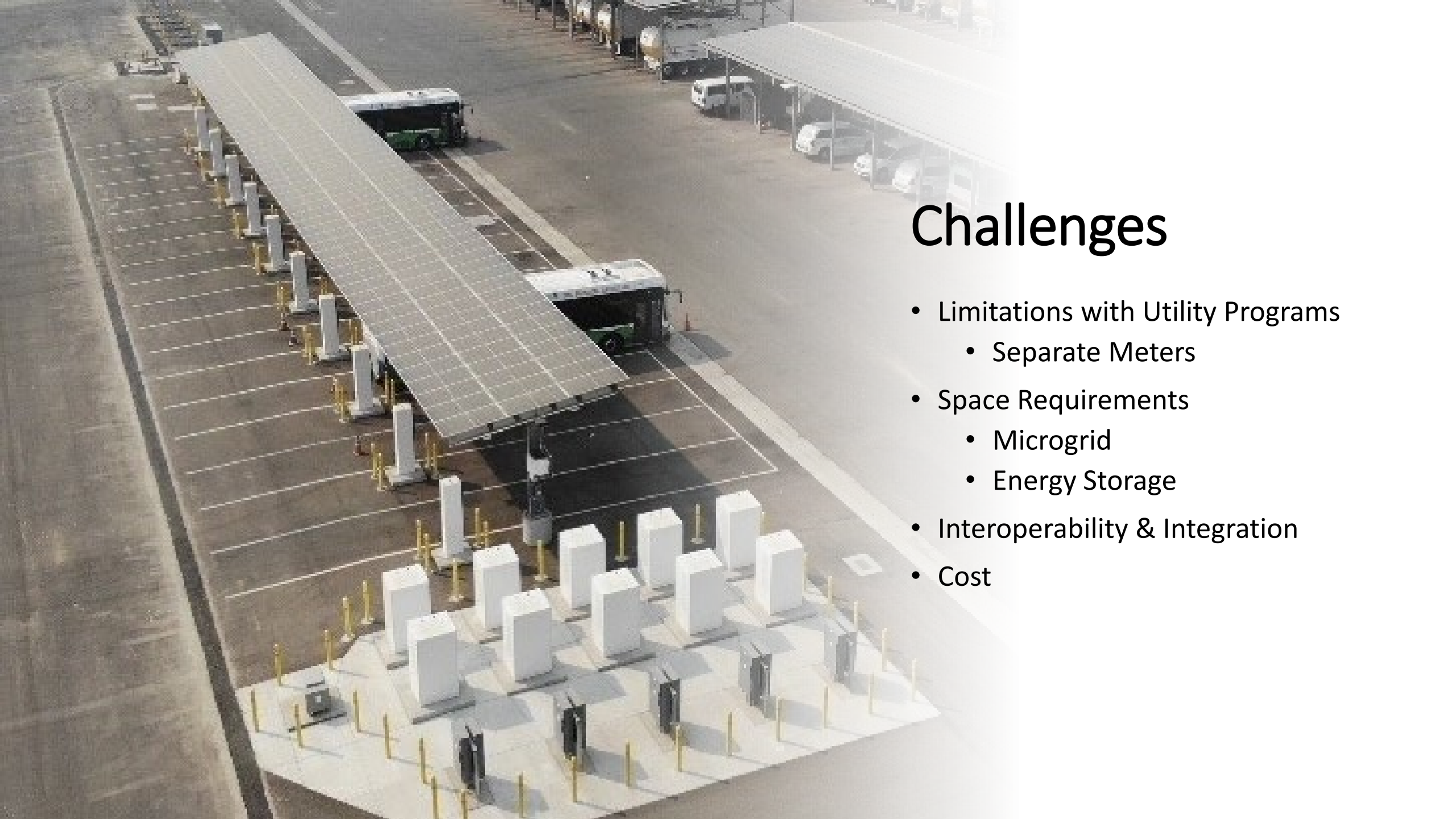
Resiliency Planning

- Planning In-Progress
 - Federal Transit Administration (FTA)
 - Helping Obtain Prosperity for Everyone (HOPE)
 - California Energy Commission (CEC)
 - Blueprint
 - Department of Transportation (DOT)
 - Strengthening Mobility and Revolutionizing Transportation (SMART)

Opportunities for Success

- Living Laboratories
- Maximize Investments
- Reduce TCO
- Optimization
 - Energy
 - Infrastructure
- Integrated Charge Management





Challenges

- Limitations with Utility Programs
 - Separate Meters
- Space Requirements
 - Microgrid
 - Energy Storage
- Interoperability & Integration
- Cost



Thank You!